



LCC Modelling System

B 7N-01 O-16.5 large engine shed (1:43.5 scale)

**All drawings are not in scale.
Some proportions on drawings may differ from reality.**

For additional elements for modification and extensions please visit our website at www.lcut.co.uk or email us at contact@lcut.co.uk
Building footprint: 243mm long x 145mm wide

Bundle contains:

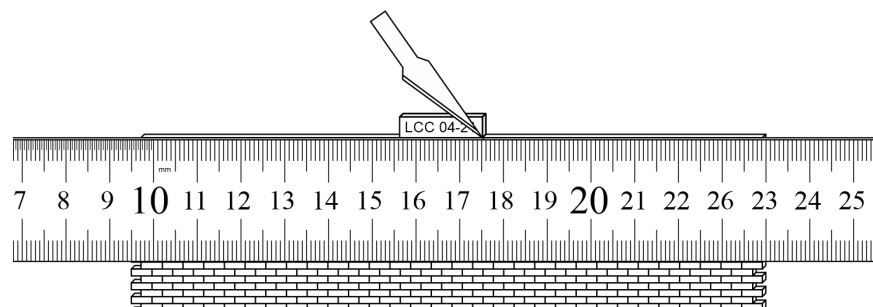
- 1x LCC 00-00
- 1x LCC 00-01
- 1x LCC 70-09
- 2x LCC 70-16
- 2x LCC 70-17
- 2x LCC 7N-00DL
- 2x LCC 7N-00DDR
- 1x LCC 7N-06
- 2x LCC 7N-06B
- 3x LCC 7N-06T
- 2x LCC 7N-06R
- 1x LCC 7N-07
- 1x LCC 7N-08
- 6x LCC 7N-25
- 1x LCC 7N-46
- 6x M 70-01
- 1x M 70-33C

We recommend PVA or any other paper/wood glue for the main fibre board parts and resin based glue for 3D printed parts if present.

Painting recommendation:

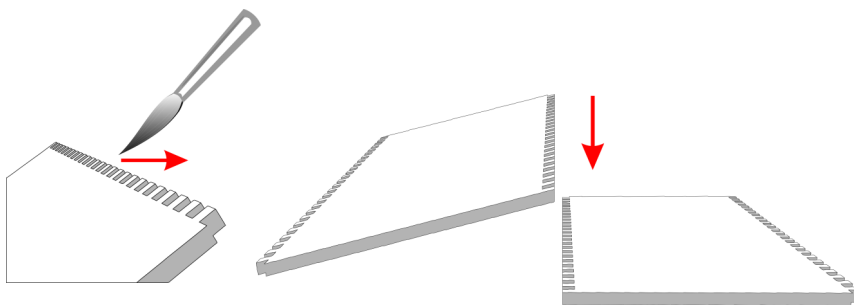
We recommend using acrylic or enamel paints. There is no need to undercoat the surface but it can be done if desired. The material used is porous and relatively forgiving, heavy coats are unlikely to flood the brickwork. If you experience any warping in the material leave it to fully dry and then gently bend it back into shape. Always test any paints in an area that will not be seen or on spare parts/off cuts.

REMOVING PART NUMBER TABS



Using a ruler (ideally flat steel one) remove tabs from the parts. Use multiple light passes with a sharp hobby knife. Tab placement is usually in an area that will be covered with something so small imperfections in cuts are usually not a problem.

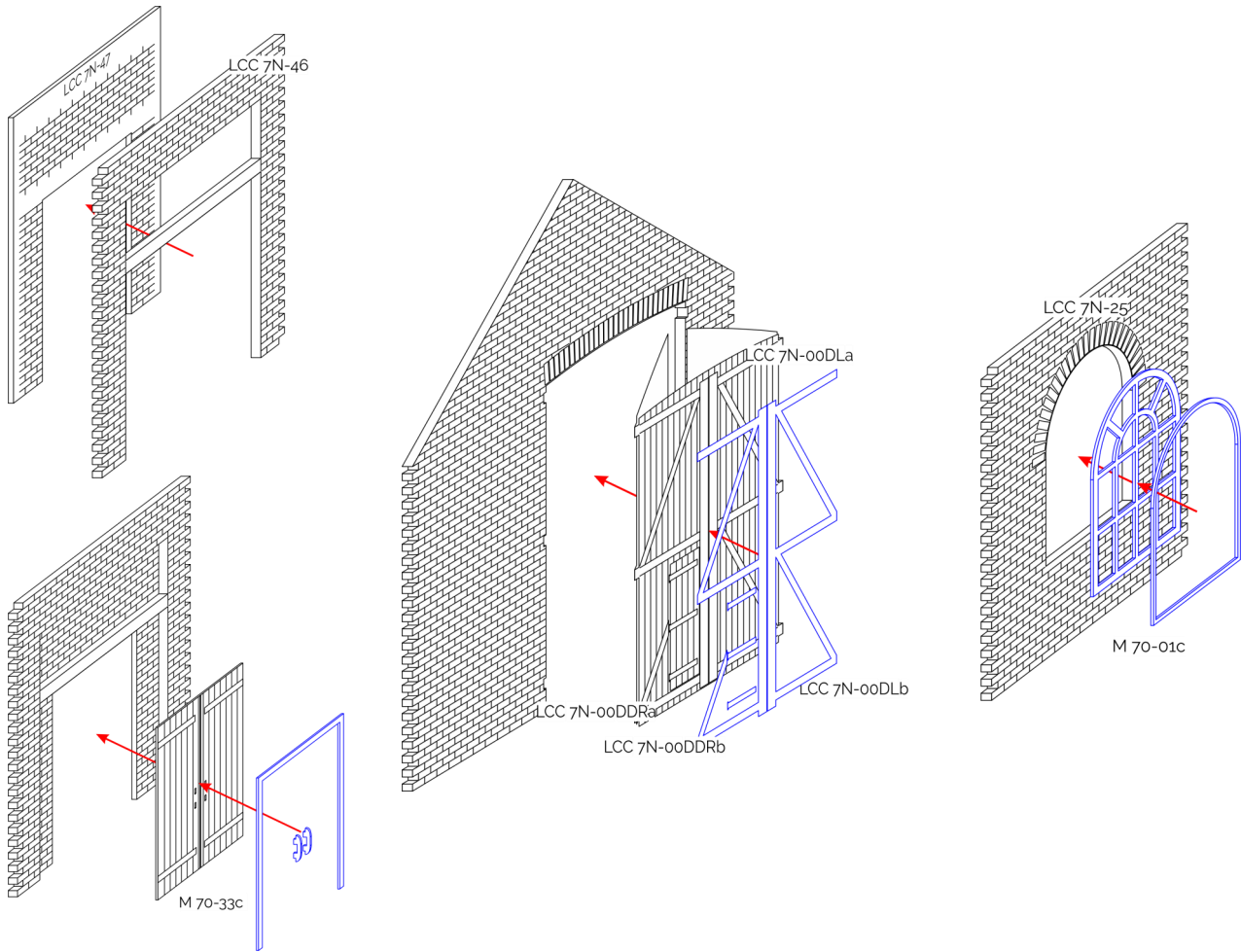
CONNECTING PARTS



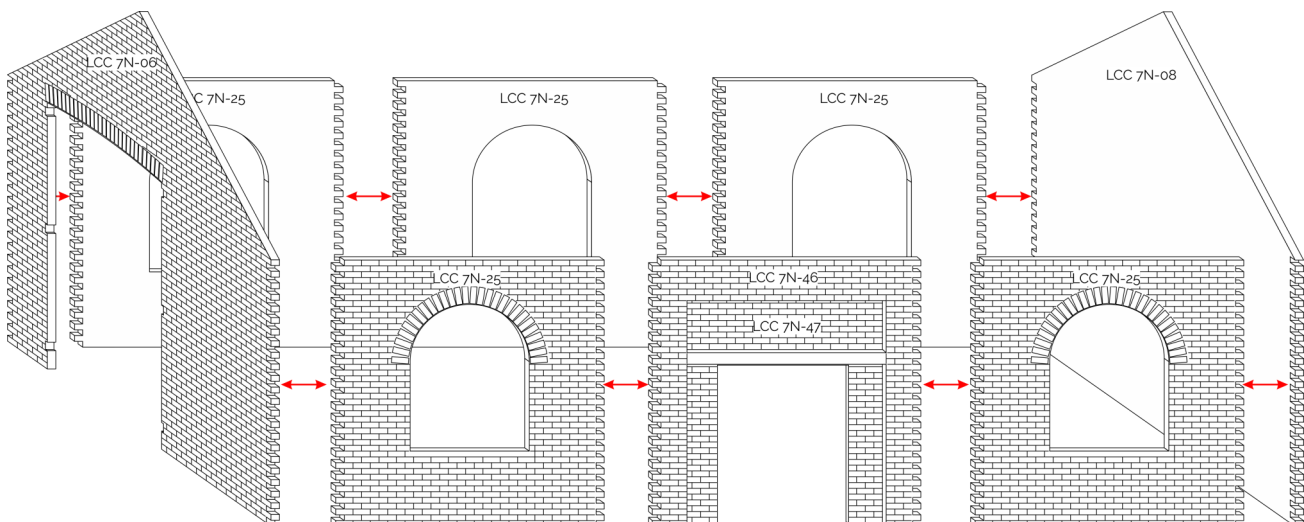
Recommended way of gluing parts together is to apply PVA glue to the interlocking bricks working from back of the part to the front. This ensures there will be no glue overflow on the front, visible side. Then lay the part without glue on flat surface laying on its front (engraved side). Press the part with glue onto the part without glue. Gently push parts together from sides to close the gap. Corners follow a similar procedure but at a right angle. Apply glue only on the inner surface of the corner joint

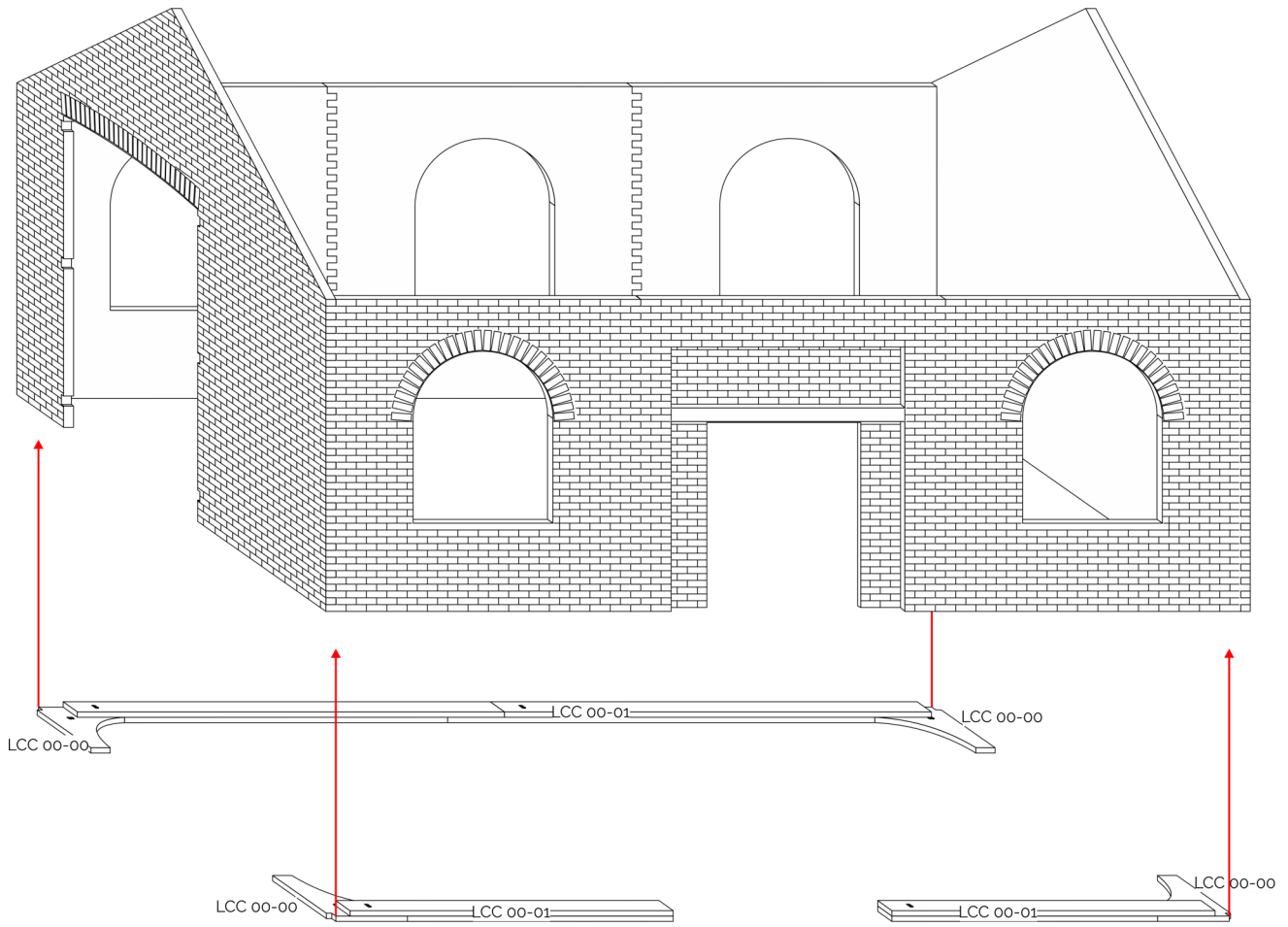
This kit includes parts to build the engine shed with or without the side door and as either a close ended or drive through shed. Extra leftover parts after building the shed can be used as painting practice as well.

We recommend not to glue in windows, doors, and gates initially. Assemble the walls first and paint them before gluing in any of the fittings. The gates can be glued in with the strapping facing in or out (facing out show in the manual, facing in show on product picture).

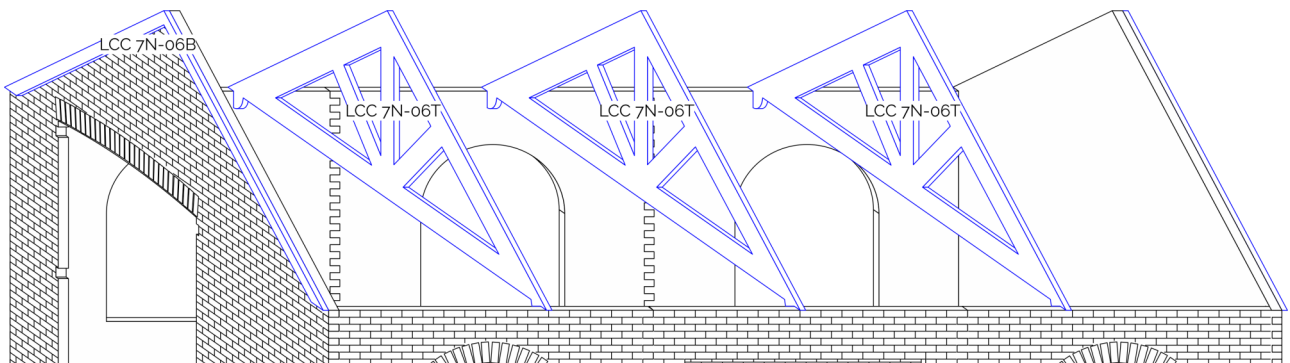


Build the side walls first by joining the 3 elements. After glue has dried join the side walls to the end walls. Use gentle pressure when working with the door panel as its prone to bending.



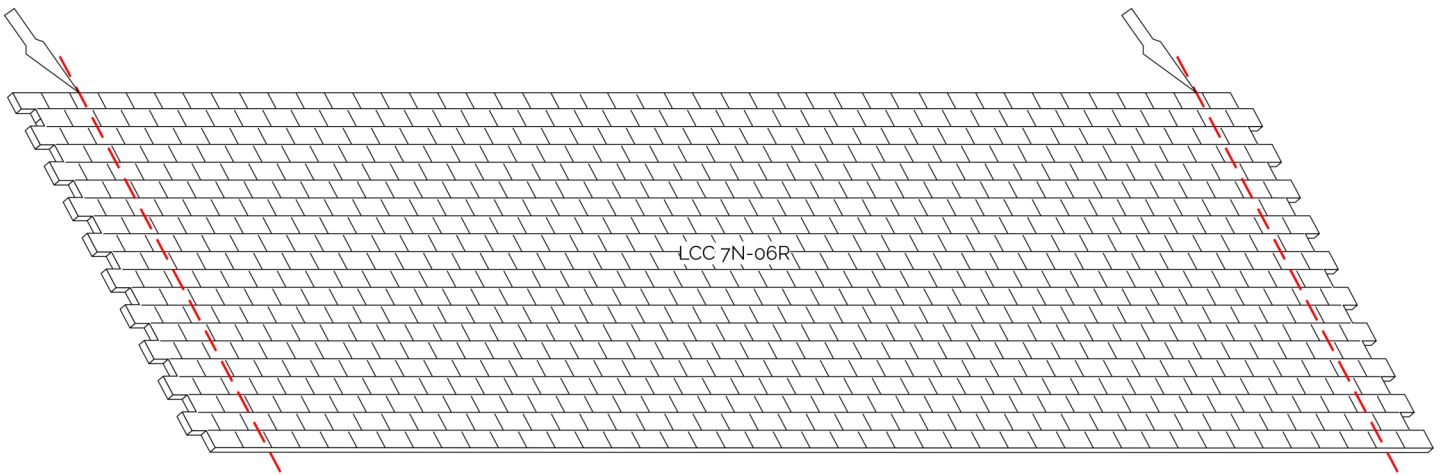


Use the parts marked "B" from LCC 00-00 and LCC 00-01 to make wall and corner supports. This step can be skipped but is recommended as it helps keep everything straight and rigid.



Glue barbe boards (LCC 7N-06B) to the end panels making sure they are flush with the top edge.

Glue in the roof trusses (LCC 7N-06T) equally spaced.



Roof panels need trimming to width. Measure carefully and cut with a sharp hobby knife. Panels have a little extra height to allow for longer overhang if desired. For a shorter overhang trim the panel to height as well.

Assemble the vents (LCC 74-16 and LCC 74-17) as show on the diagram below. Make sure the engraved in part on the vent sides is facing inside, this allows for a closer and neater fit.

Finish the roof with ridge tiles LCC 70-09.

